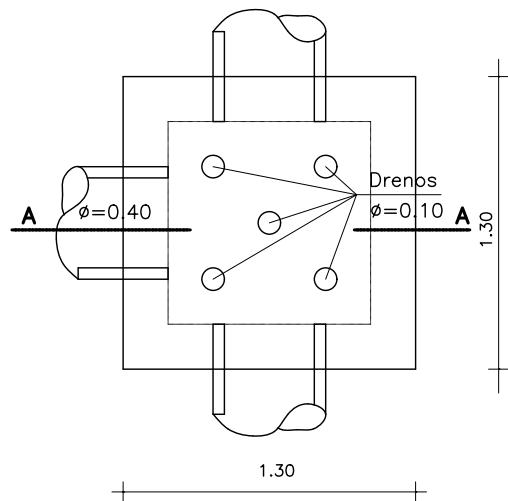
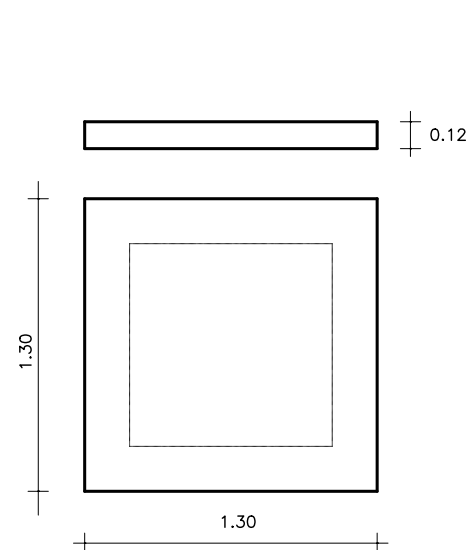


CAIXA COLETORA COM GRELHA PARA TUBOS DE $\phi 0,40m$

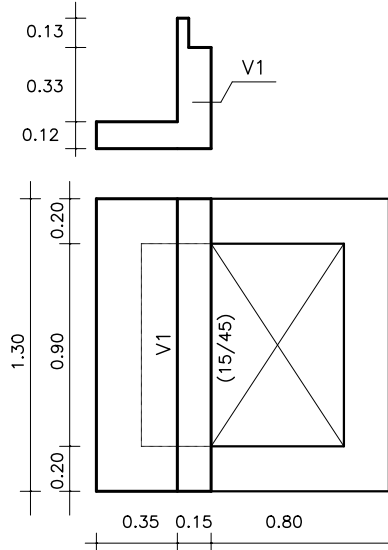
PLANTA BAIXA



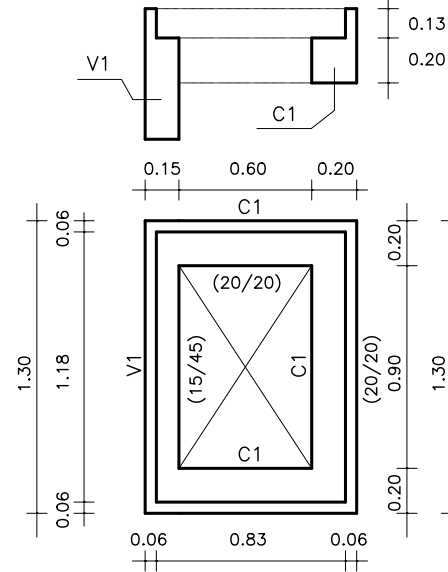
FORMA FUNDO



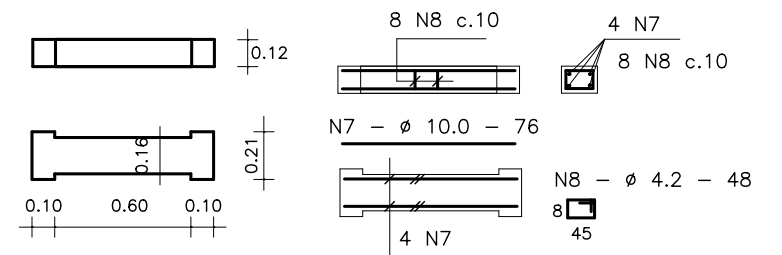
FORMA NÍVEL 1



FORMA NÍVEL 2

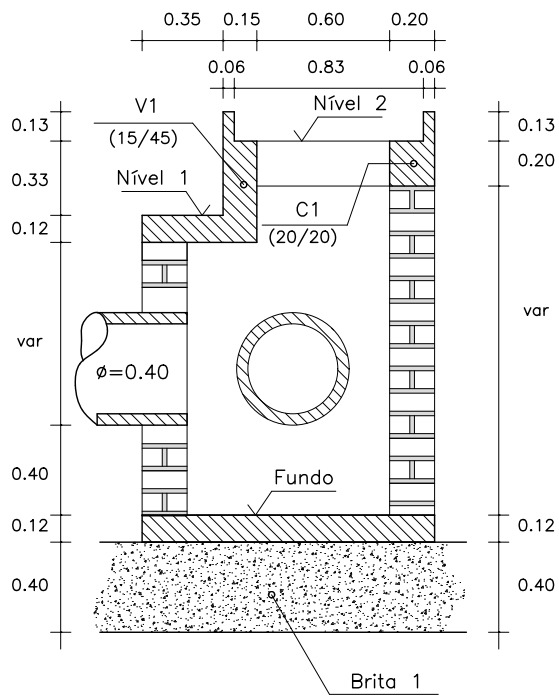


GRELHA (5x)

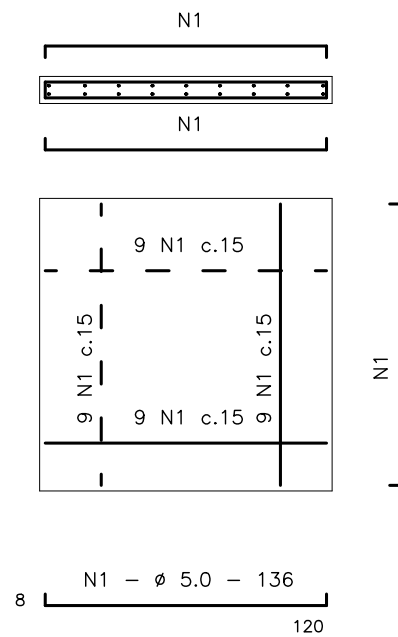


N	ϕ	Q	COMPRIMENTO	
			UNIT.	TOTAL
1	5.0	47	136	6392
2	5.0	13	118	1534
3	5.0	13	120	1560
4	5.0	18	80	1440
5	12.5	2	160	320
6	5.0	5	var	1400
7	10.0	20	76	1520
8	4.2	40	48	1920

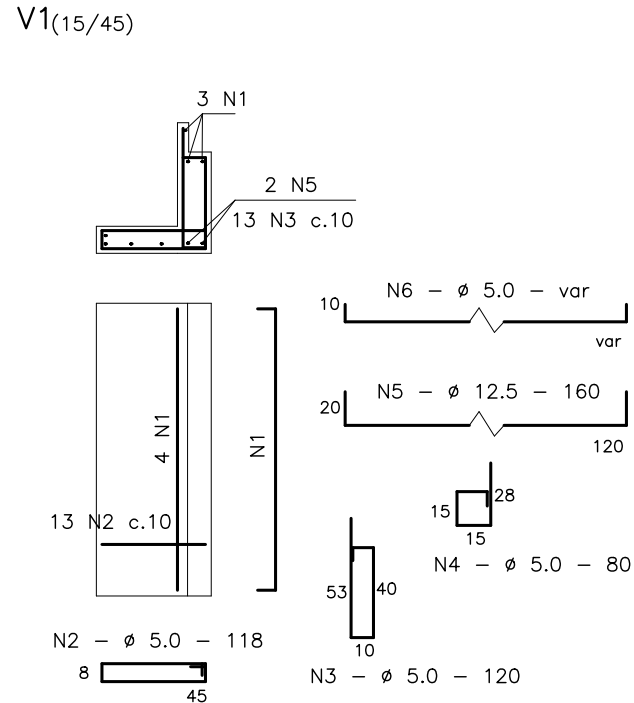
CORTE A-A



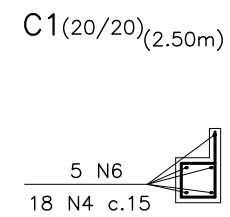
ARMAÇÃO FUNDO



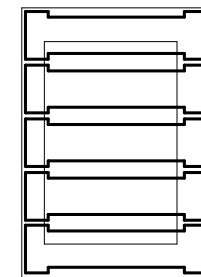
ARMAÇÃO NÍVEL 1



ARMAÇÃO NÍVEL 2



GRELHA



CA - 50

ϕ	COMP.	PESO	PESO + 10%
12.5	4	4	4
10.0	15	10	11
TOTAL		14	15

CA - 60

ϕ	COMP.	PESO	PESO + 10%
5.0	123	20	22
4.2	19	3	3
TOTAL		23	25

Fck = 21.0 MPa

1.30 / 1.30

ALVENARIA DE TIJOLO MACIÇO:
-(1,3x2+0,90x2)x0,20mx1,5m=1,32m³
CONCRETO SIMPLES: (fck>21MPa)
-LAJE DE FUNDO: 0,12x1,3x1,3=0,21m³
-LAJE NÍVEL 01: 0,12m2x1,3m=0,14m³
-CINTA C1: 0,12m³
-GRELHA (5x): 0,0166m3x5ud=0,083m³
TOTAL: 0,553m³
COLCHÃO DE BRITA:
-BRITA: 0,40x1,3x1,3=0,68m³
DRENO (FUNDO):
-TUBO DE PVC: 0,30x5ud=1,5m
-MANTA GEOTEXTIL: 0,2x0,2x5ud=0,2m²
-ARAME: 1,0mx5ud=5,0m