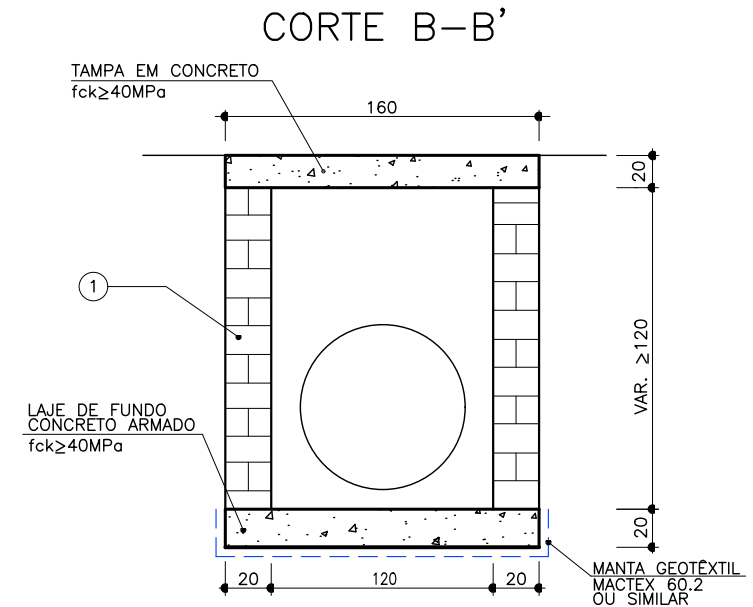
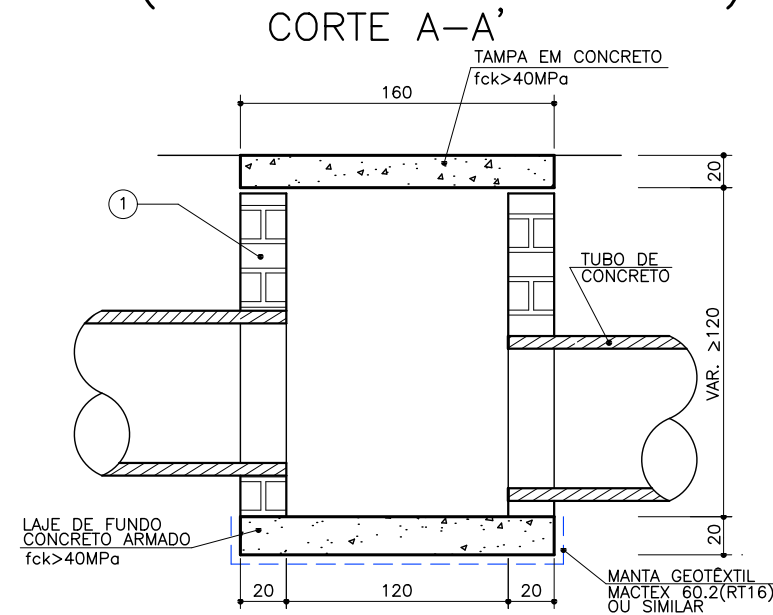
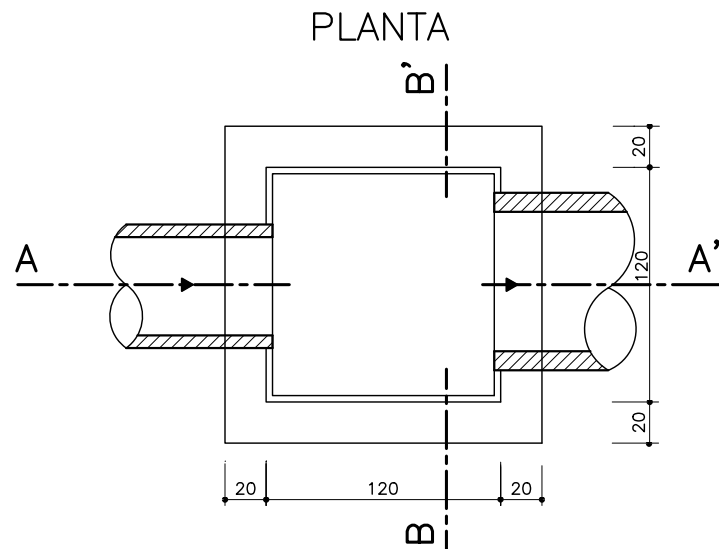
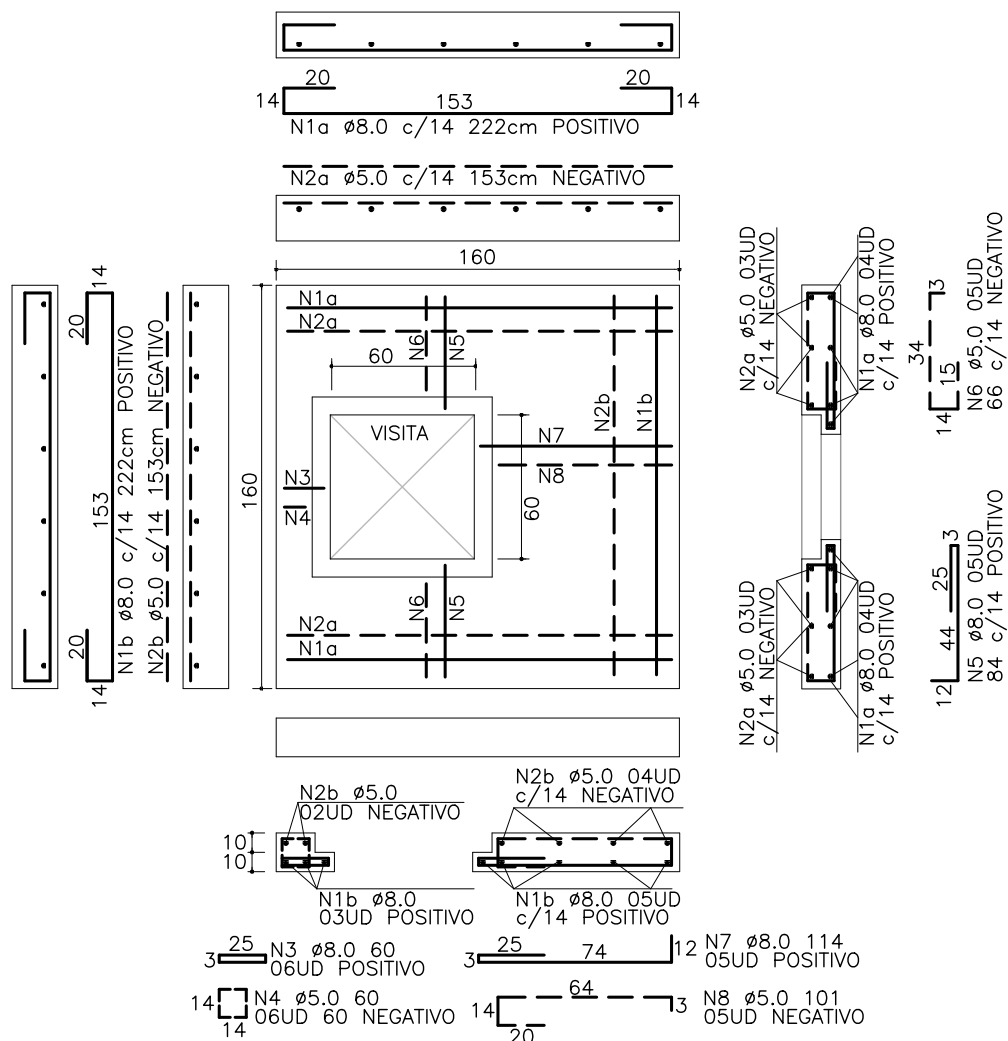


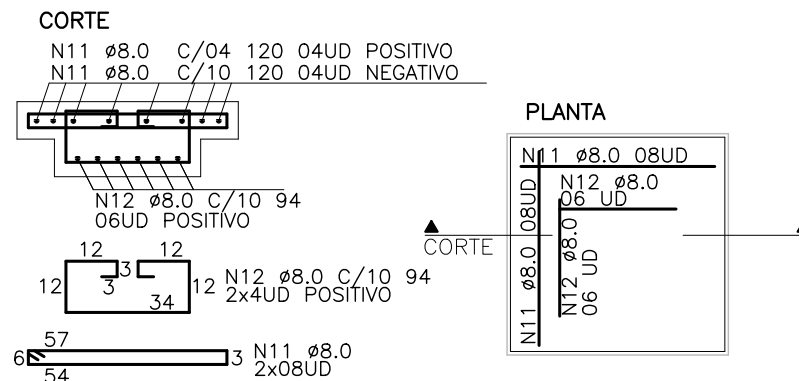
POÇO DE VISITA SIMPLES ø0,60m (PARA ÁGUAS PLUVIAIS)



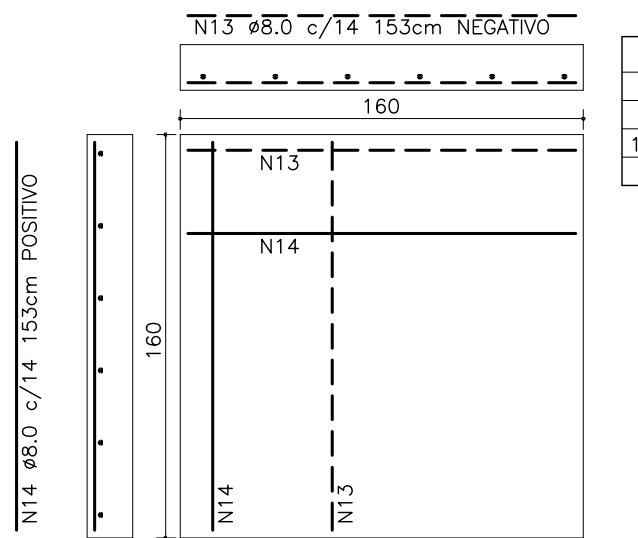
DETALHE DA TAMPA



VISITA



DETALHE DA LAJE DE FUNDO



ACRESCENTAR ESPAÇADORES (CARANGUEJOS)
12ud/PLACA h=15cm

QUADRO DE FERRAGEM:

POÇO DE VISITA ø=0,60m (h=1,2m)*						
N	Ø	QUANT.	COMP. (cm)	COMP. TOTAL(m)	PESO (kg)	PESO+10%
1a	8.0	08	222	16,16	7,02	7,72
2a	5.0	06	153	9,18	1,41	1,56
1b	8.0	08	222	17,76	7,02	7,72
2b	5.0	06	153	9,18	1,41	1,56
3	8.0	06	60	3,60	1,42	1,56
4	5.0	06	60	3,60	0,55	0,61
5	8.0	12	84	10,08	3,98	4,38
6	5.0	12	66	7,92	1,22	1,34
7	8.0	05	114	5,70	2,25	2,48
8	5.0	05	101	5,05	0,78	0,86
9	8.0	04	90	3,60	1,42	1,56
10	10.0	3*	130	3,90	2,41	2,65
11	8.0	16	120	19,20	7,58	8,34
12	8.0	12	94	11,28	4,46	4,90
13	8.0	24	153	36,72	14,50	15,95
14	8.0	24	153	36,72	14,50	15,95
TOTAL					71,94	79,14

RESUMO AÇO CA50			
Ø	COMP. TOTAL(m)	PESO (kg)	PESO+10%
8.0	162,42	64,16	70,57
10.0	3,90	2,41	2,65
TOTAL		66,57	73,22

RESUMO AÇO CA60			
Ø	COMP. TOTAL(m)	PESO (kg)	PESO+10%
5.0	34,93	5,38	5,92
TOTAL		5,38	5,92

OBSERVAÇÕES:

- Fck ≥ 40MPa
- COBRIMENTO MÍNIMO CONSIDERADO: 0,03m
- peso considerado das rodas:
9,8T/4rodas = 2,45T/roda x 1,25 x
1,3 x 4rodas/tampa = 15,93T
- 1-ALVENARIA DE BLOCOS DE CONCRETO ASSENTES COM ARGAMASSA MISTA TRAÇO T5 e=2,0cm, REBOCO INTERNO COM ARGAMASSA DE CIMENTO E AREIA TRAÇO 1:3 RESISTENCIA MÍNIMA DOS BLOCOS 4,5MPa
- 2-NOS POÇOS DE VISITA COM ALTURA IGUAL OU SUPERIOR A 1,80 m, SERÁ EXECUTADA, NA ALTURA MEDIANA, UMA CINTA DE CONCRETO ARMADO DE 0,20m x 0,20m ARMAÇÃO (4 ø=8.0 e estribos ø=5.0 c/10)